

# Hankie Couture

## Square Neck Bodice Dress



By Marsha Greenberg

- Seams are 1/4 inch.
- Use 100% cotton for lining (batiste makes a good lining because it is very lightweight).
- Dress can be sewn by hand or machine.

## CUTTING

- Pattern piece provided covers front and back bodice. Arrange on handkerchief in such a way as to center a print or embroidery. Keep in mind ways to use corners and edges as overlays [see page 44, 50, 57, 64, 66, 104, and 121 in book (*Hankie Couture: Handcrafted Fashions from Vintage Handkerchiefs*, Runing Press, 2011) for ideas]. Cut one from handkerchief and one from lining.
- Cut a rectangle for the skirt using the decorative edge of the handkerchief as the hem. Determine height of skirt by measuring doll from waist to desired finished dress length. Allow 1/4 inch for waist seam.

## INSTRUCTIONS

1. Stitch darts on bodice front as indicated on pattern piece. Press darts toward center. Repeat for lining (fig. 1).

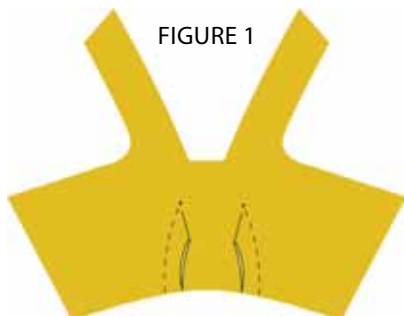


FIGURE 1

2. Pin lining to bodice with right sides together. Stitch back, armhole, and neck edges, pivoting at dots indicated on pattern (leave bottom waist edge open). Clip seam allowance in corners of neck as shown (fig. 2).

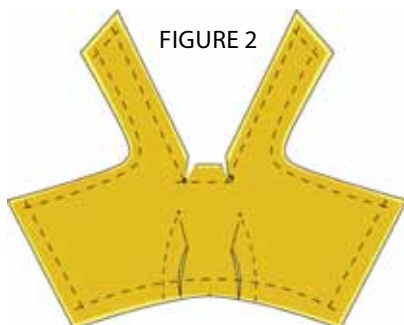


FIGURE 2

3. Stitch strap ends to lining on inside back. Place end of strap 1/4 inch below top edge of bodice and 7/8 inch from back edges. Hand stitch in place (fig. 3).

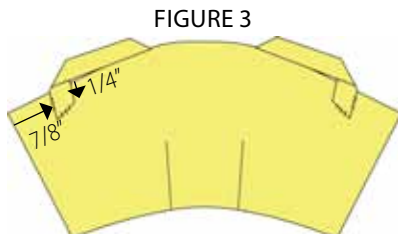


FIGURE 3

4. Mark center of skirt rectangle and run gathering stitches in top raw edge (fig. 4).

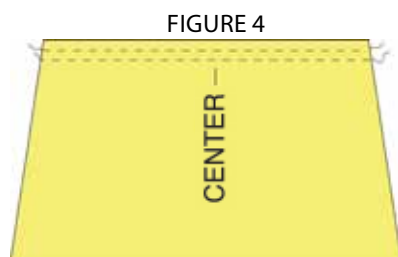


FIGURE 4

5. Gather skirt to fit width of bodice and pin to bodice with right sides together. Distribute gathers evenly and stitch waist seam. Press seam toward bodice (fig. 5).



FIGURE 5

6. Place center back seam right sides together and stitch from bottom of skirt stopping approximately 4 to 4-1/2 inches from top of dress (fig. 6).

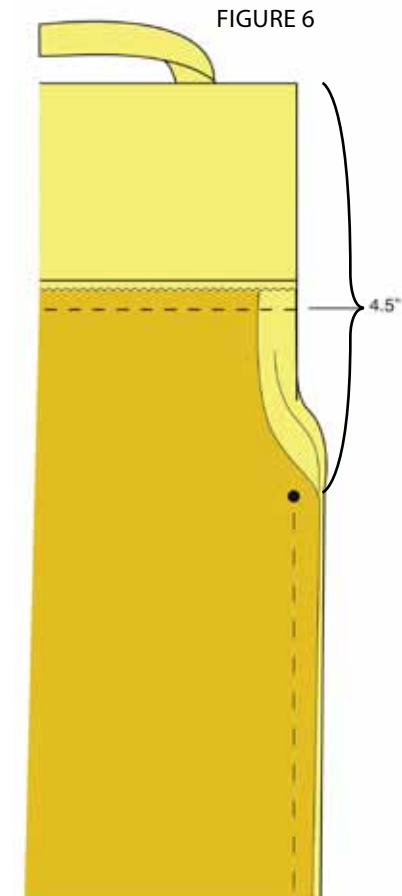


FIGURE 6

7. Try the dress on the doll to mark snap placement. Stitch snaps to back opening at waist and top of bodice (fig. 7). —SB

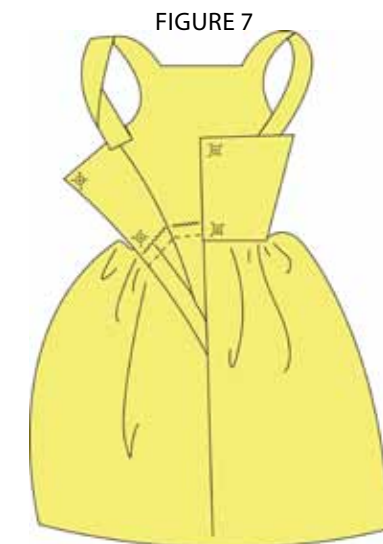


FIGURE 7

